

Designing your own initial for lace making

by Jenny Brandis, <jenny@brandis.com.au>

Many of you would like to be able to make an lace initial for a treasured friend or loved one but are unsure how to go about it. Well, I can not really help with the actual lace side of this but I can show you how to get your own initial pricking!

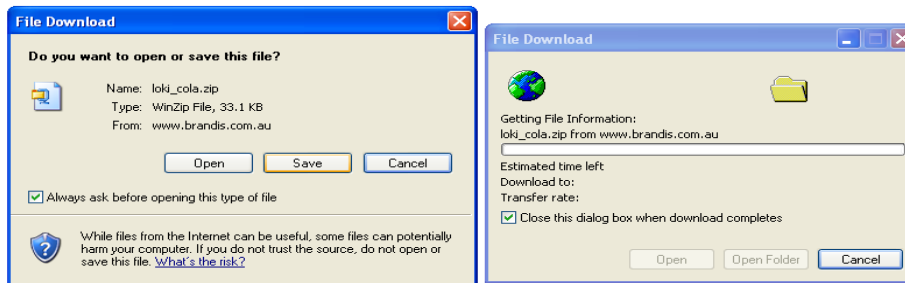
Using your computer you can easily make your own pricking. Its as simple as 1, 2, 3 How? Just follow the steps below.

1. Download the font and install it in your C:\windows\font folder.
2. Open Word and make the pricking
3. Print

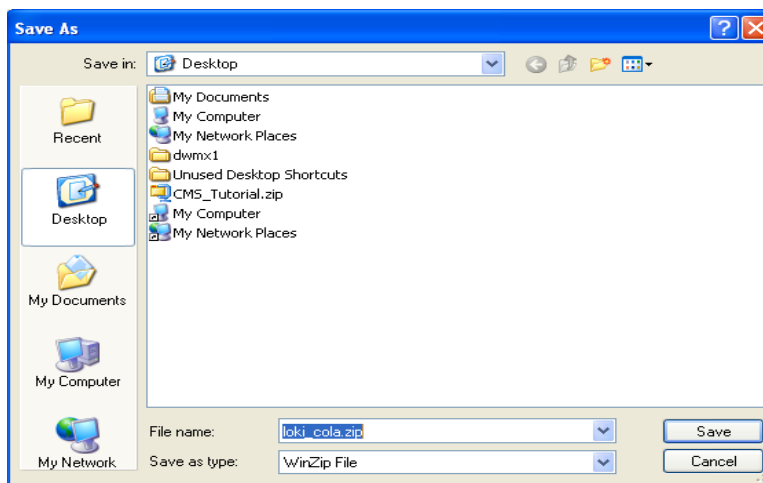


1. To download and install the font

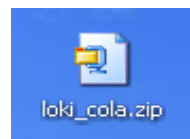
Type www.brandis.com.au/downloads/loki_colz.zip into your internet browser



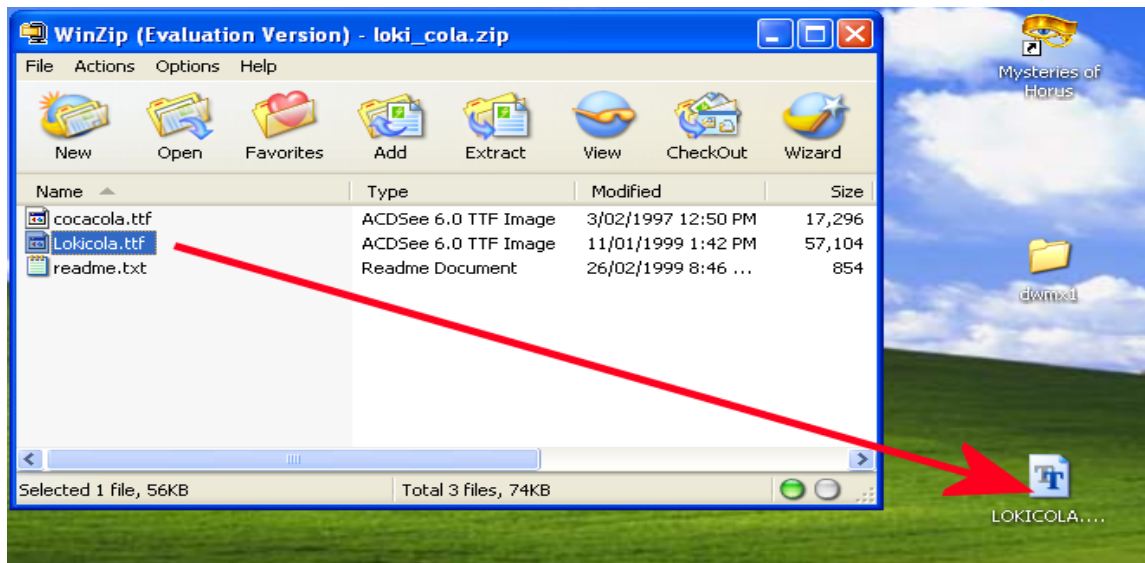
Click on SAVE



This will save the file to your desktop.
Double click on the icon on the desktop
This opens the file in Winzip

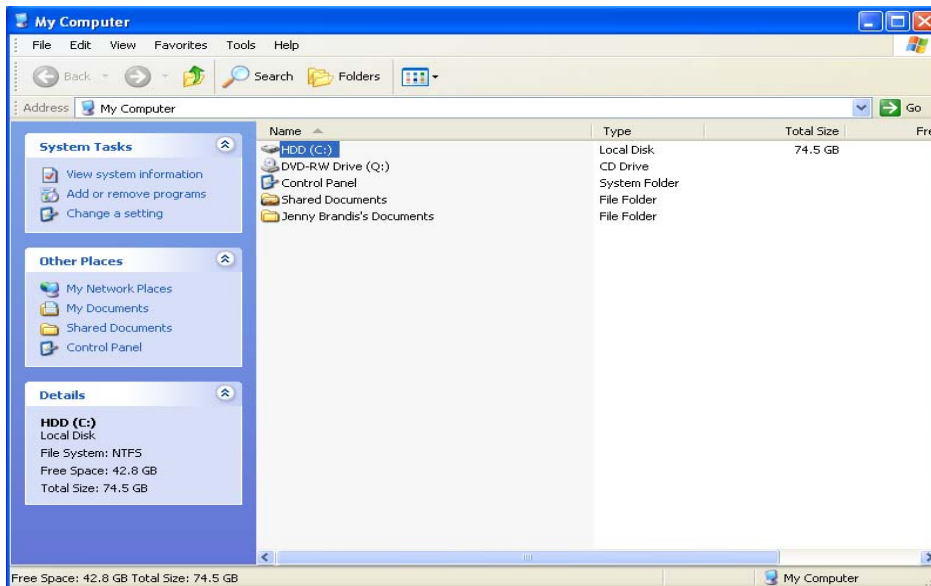


Highlight the file Lokicola.ttf and then ...drag it to the desktop



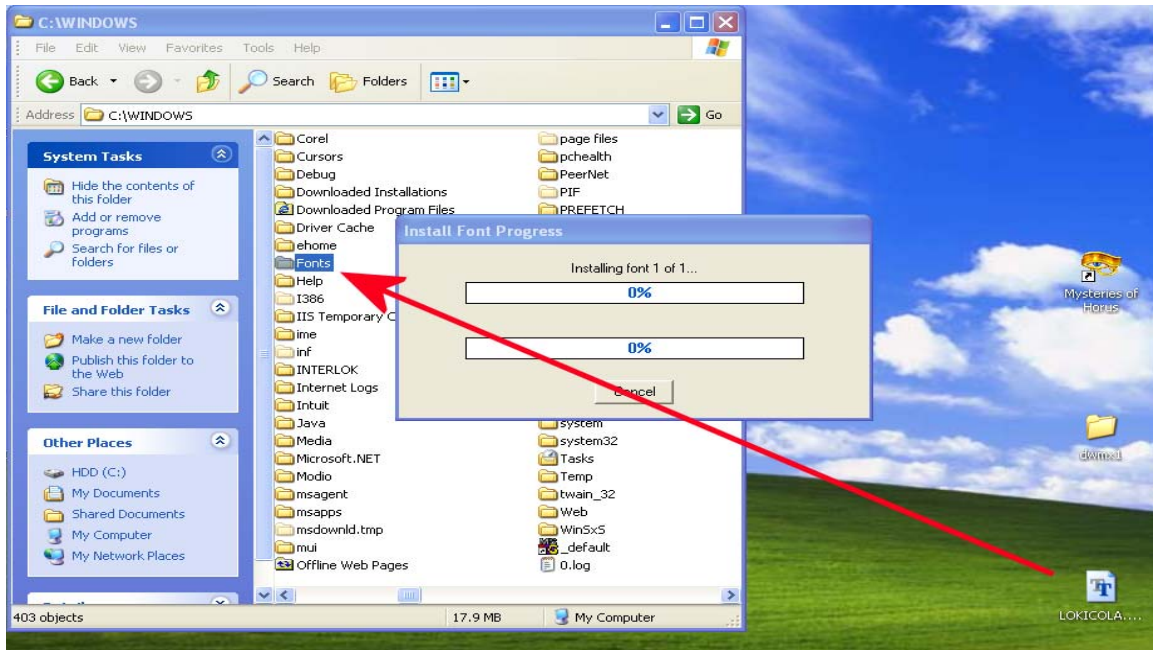
Close Winzip.

Double click on the My Computer Icon



Double click on the C drive and navigate to the Windows folder

Drag the Lokicola.ttf file from the desktop to the FONTS folder and the Install Font Progress window will pop up. Once that window goes away the font is ready to use on your computer.



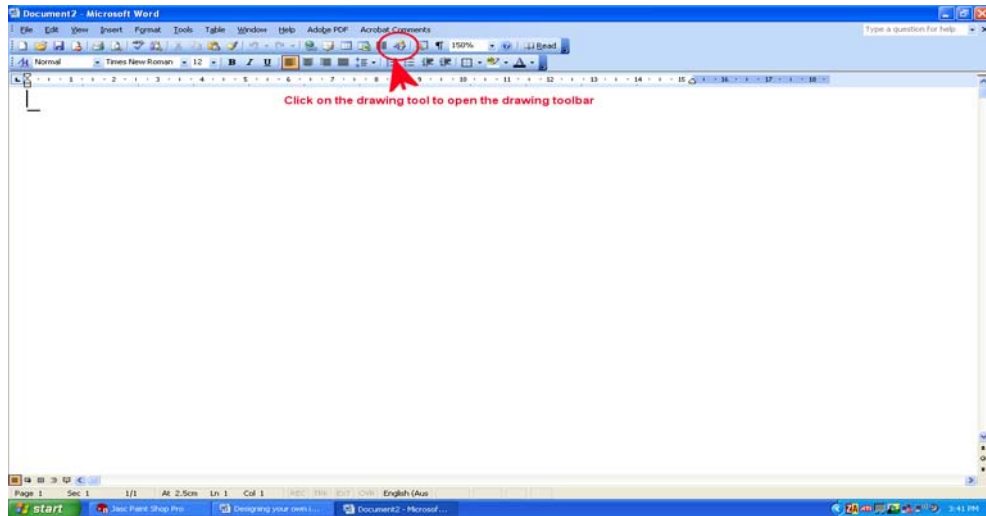
NB: If you are only going to use this font once, leave it on the desktop and before you open Word, double click on it, drop it to the task bar. It will appear in the font selection in Word until you close the file on the taskbar.

A good way to access seldom used fonts. (I store mine in a folder called tempfonts, then divided into cursive, dingbat, capital, dingbat letters etc)

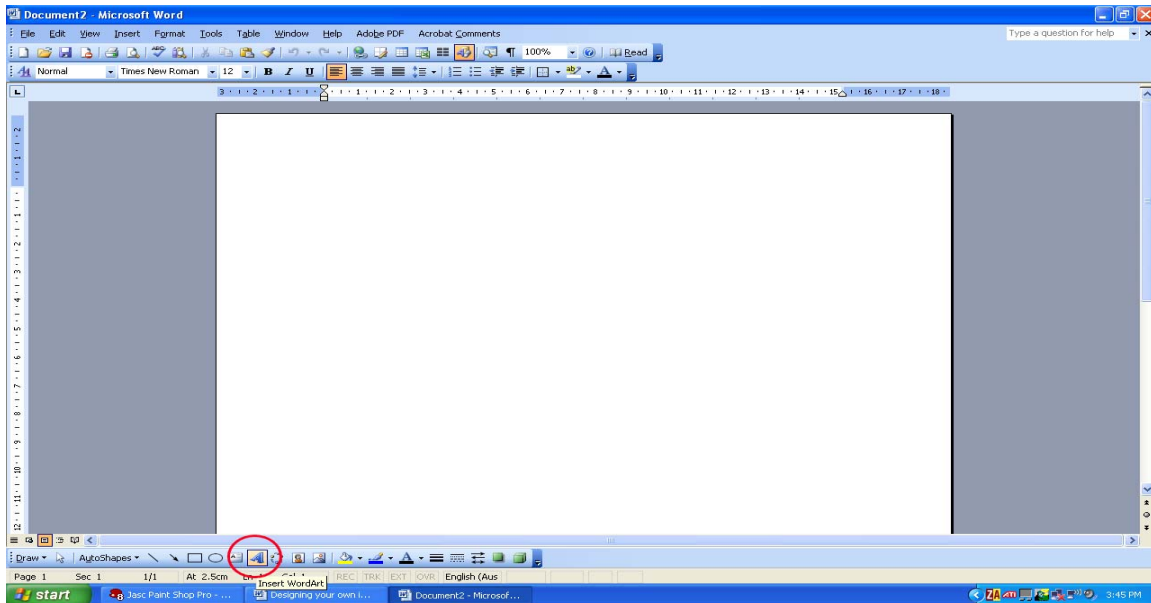
2. Making the pricking

Open Word

Click on the drawing icon to open the drawing toolbar and resize the work area on the screen.



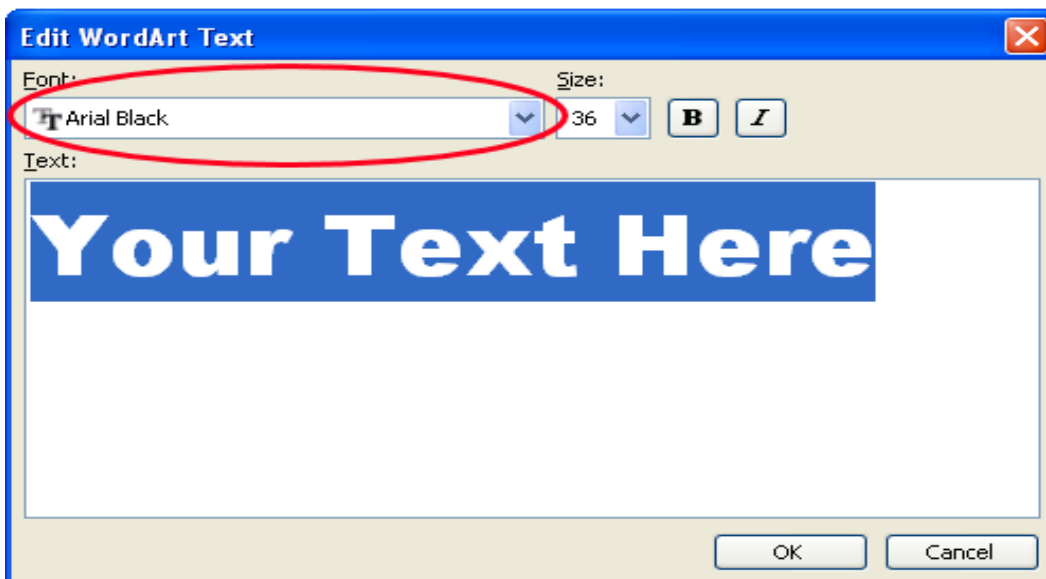
Click on INSERT WORDART in the drawing toolbar





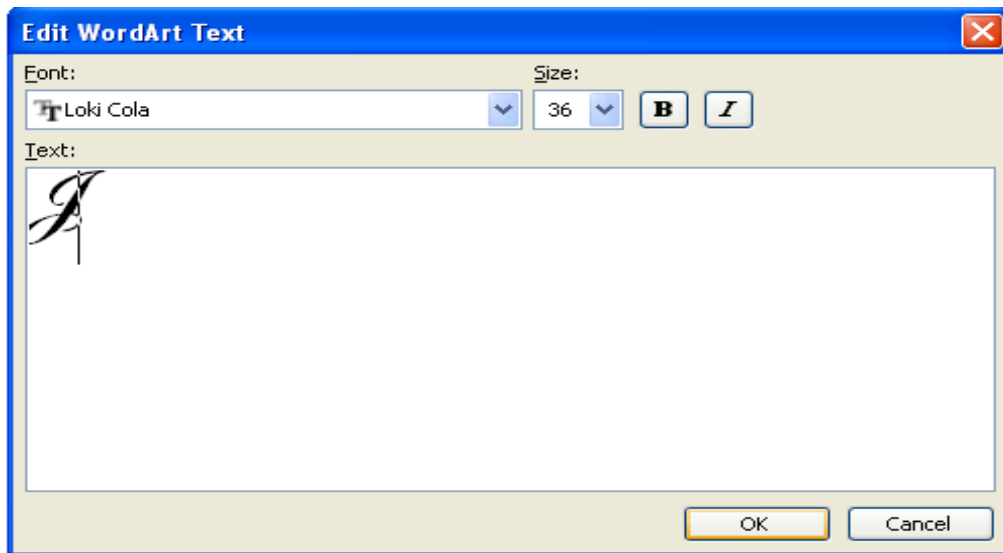
Click on OK (make no changes in here)

Click on the dropdown arrow next to Arial Black and select Loki Cola

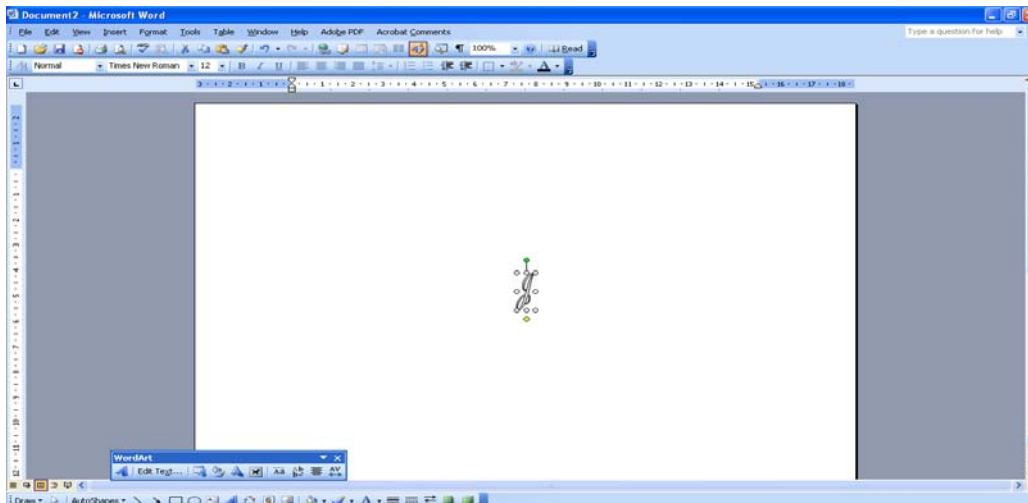


You will notice that the words “Your Text Here” is now in the new font.

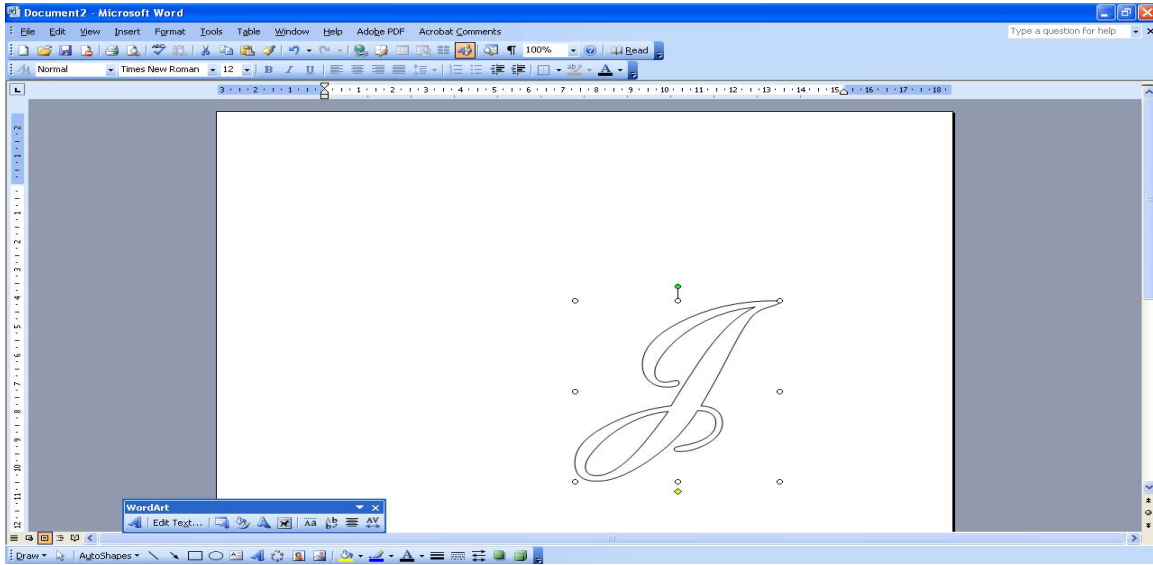
Delete those words and type in the capital letter J, then press OK



You will see that the letter on the screen is too small so we will resize it next.

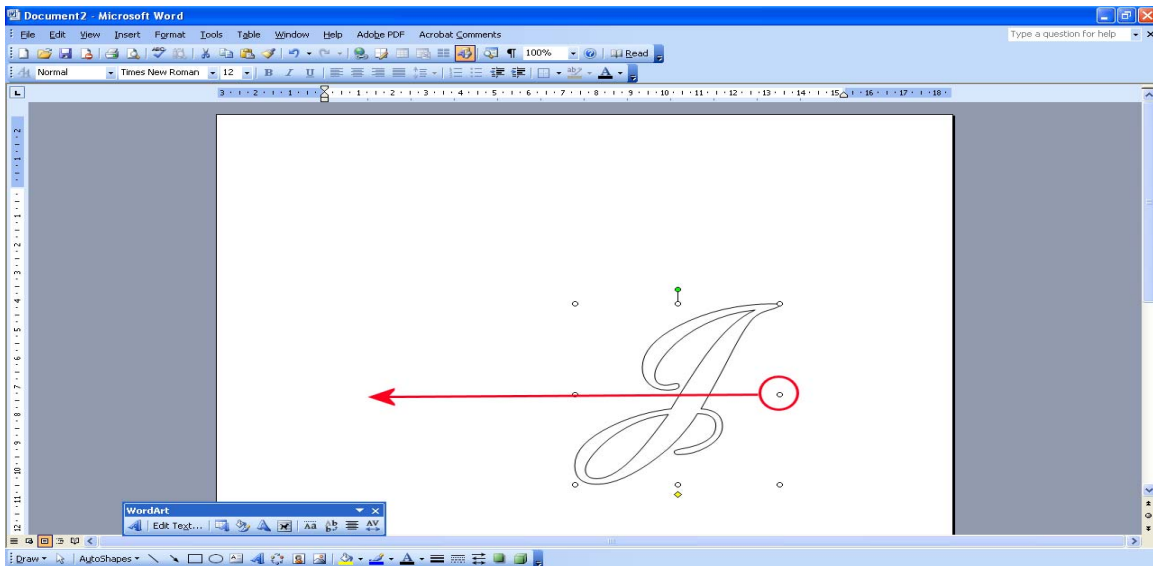


Click on a circle (handle) on the bottom right corner of the J and hold down the mouse button while you drag to the right and down.

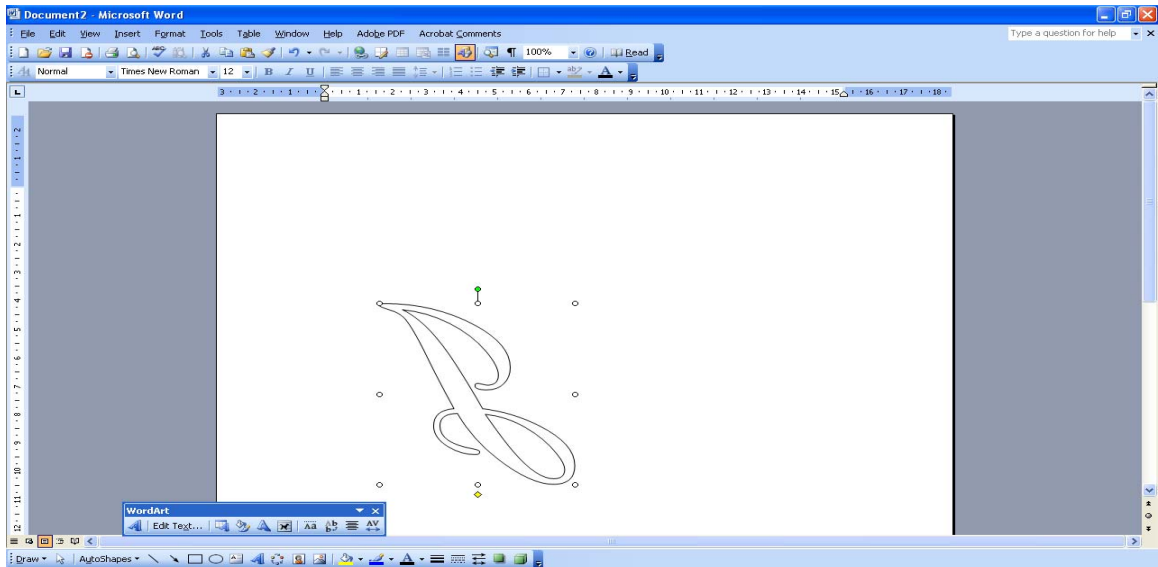


Now it is a simple case to reverse the letter ready for printing

Click on the circle (handle) on the centre right of the J and hold down the mouse button while you drag to the left.



to



3. Print

Print as normal