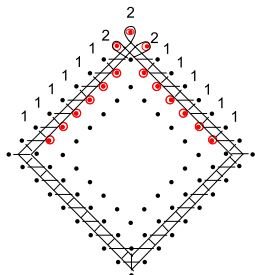


# Half stitch diamond and overlaid tally sampler

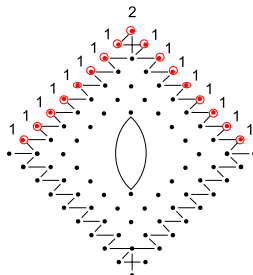
with Jenny Brandis

The overlaid tally is used in the Topaz Mat 0 the 3rd pattern in the Pattern-A-Month #6

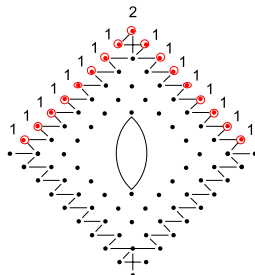
Half stitch diamond  
inside winkie pin edge  
18 pairs



Half stitch diamond  
and overlaid tally  
20 pairs

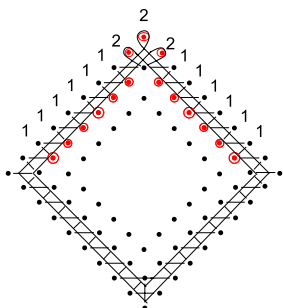


Half stitch diamond  
and overlaid tally in  
contrast colour  
20 pairs

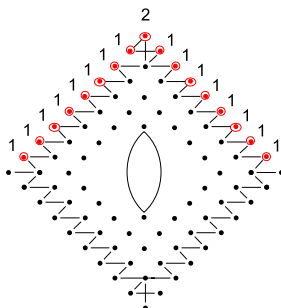


Use this pricking with threads that have a ©2023 Jenny Brandis  
Wrap Per Centimetre of between 28 and 40

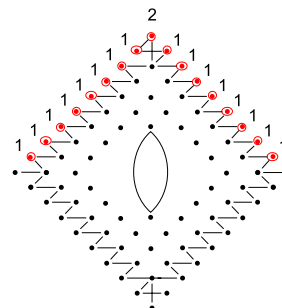
Half stitch diamond  
inside winkie pin edge  
18 pairs



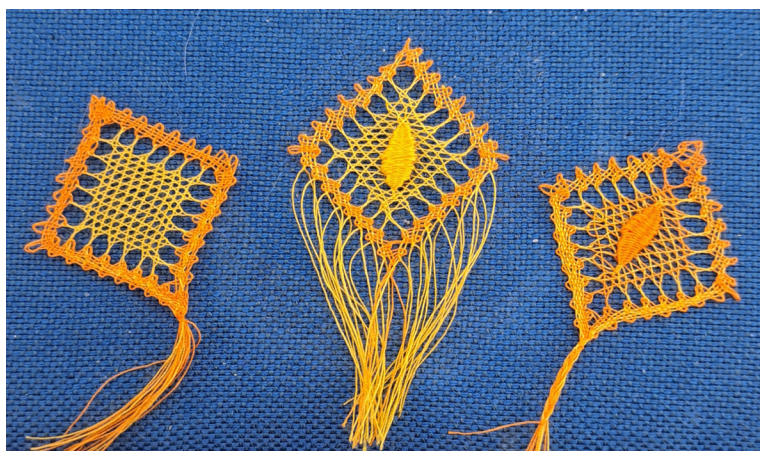
Half stitch diamond  
and overlaid tally  
20 pairs



Half stitch diamond  
and overlaid tally in  
contrast colour  
20 pairs

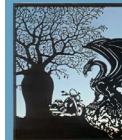
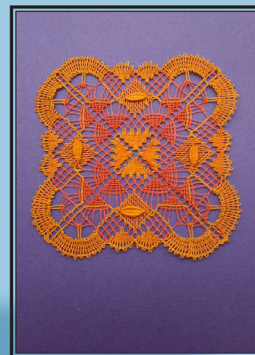


Use this pricking with threads that have a  
Wrap Per Centimetre of between 25 and 35



Patterns available as PDF files from [JennyBrandisLace.etsy.com](https://www.etsy.com/shop/JennyBrandisLace)

PATTERN-A-MONTH #6



**Topaz**

Designed and worked  
by Jenny Brandis